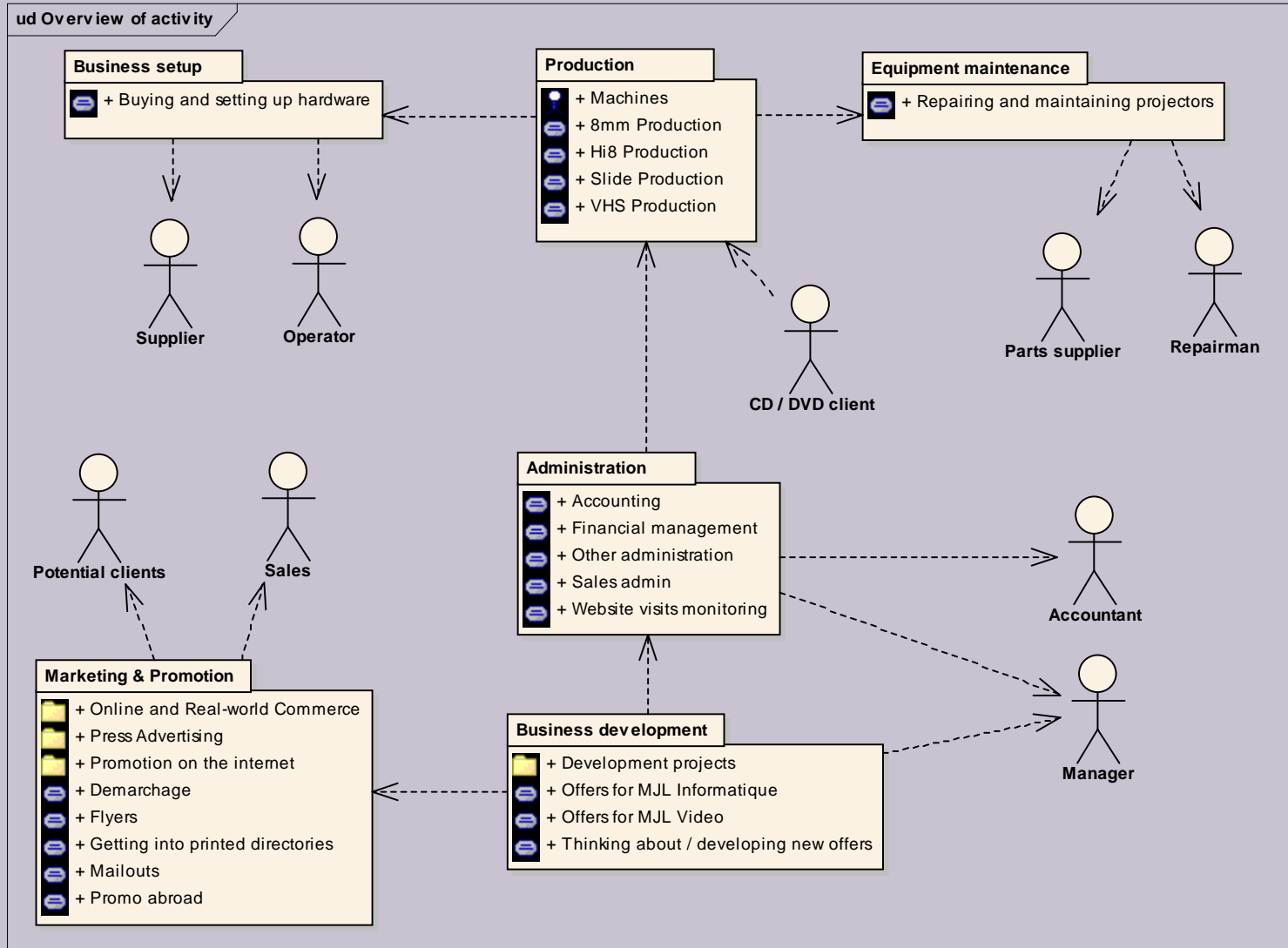


# EXEMPLES DE DIAGRAMMES UML

© MJL Informatique 2009

# Une vue fonctionnelle



# Modélisation des besoins

## cd Requirements Model

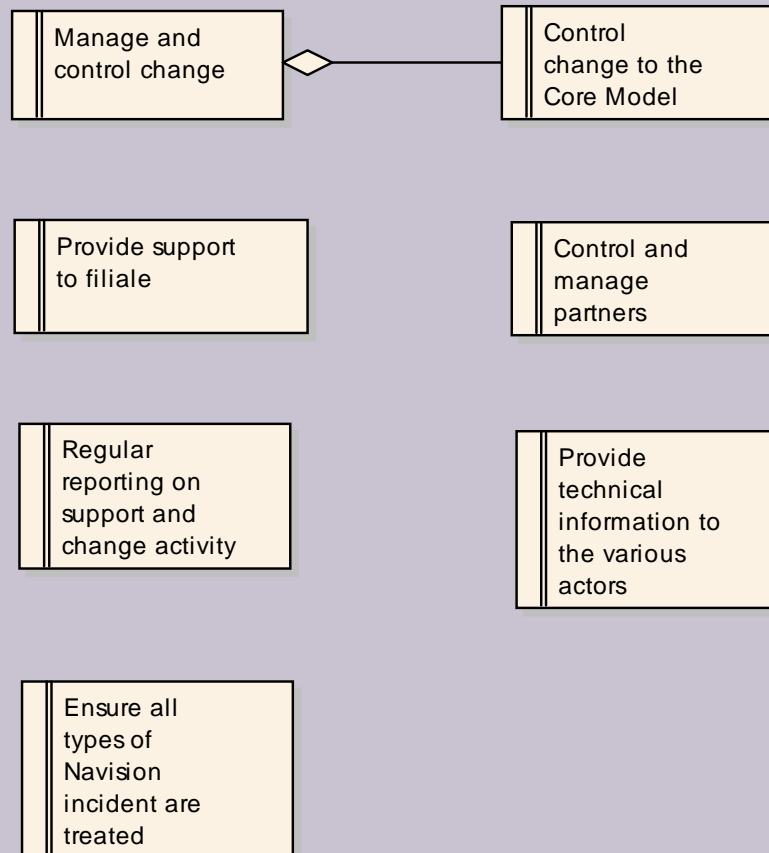
### Functional Requirements

- + Control and manage partners
- + Control change to the Core Model
- + Ensure all types of Navision incident are treated
- + Manage and control change
- + Provide support to filiale
- + Provide technical information to the various actors
- + Regular reporting on support and change activity

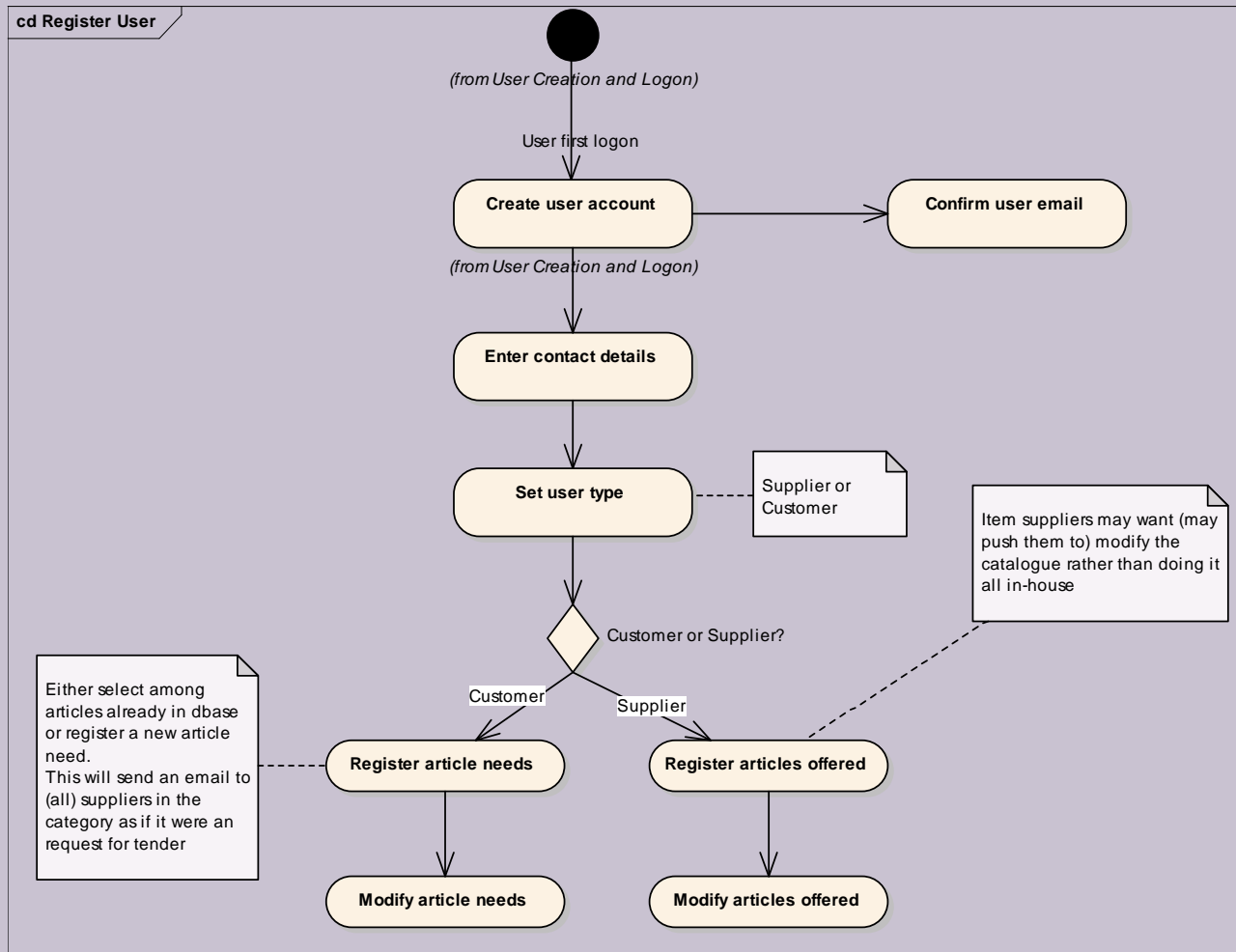
### Project Management requirements

- + Analysis and Evaluation of core model
- + Debug and correct the core model
- + Implementation of Core Model in subsids.
- + Manage interfaces to other Evalis systems
- + Select and validate worldwide partners

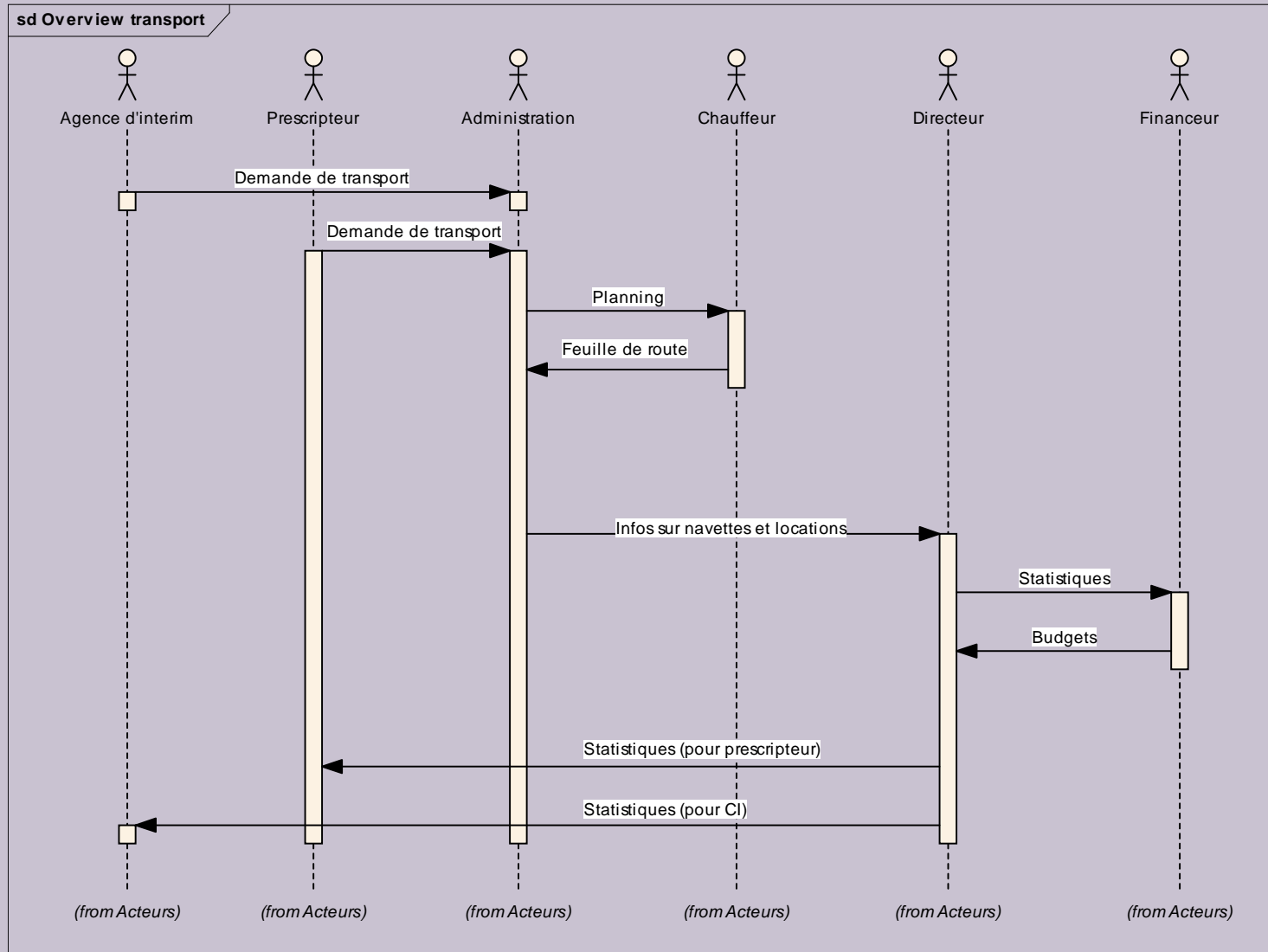
## cd Support Requirements



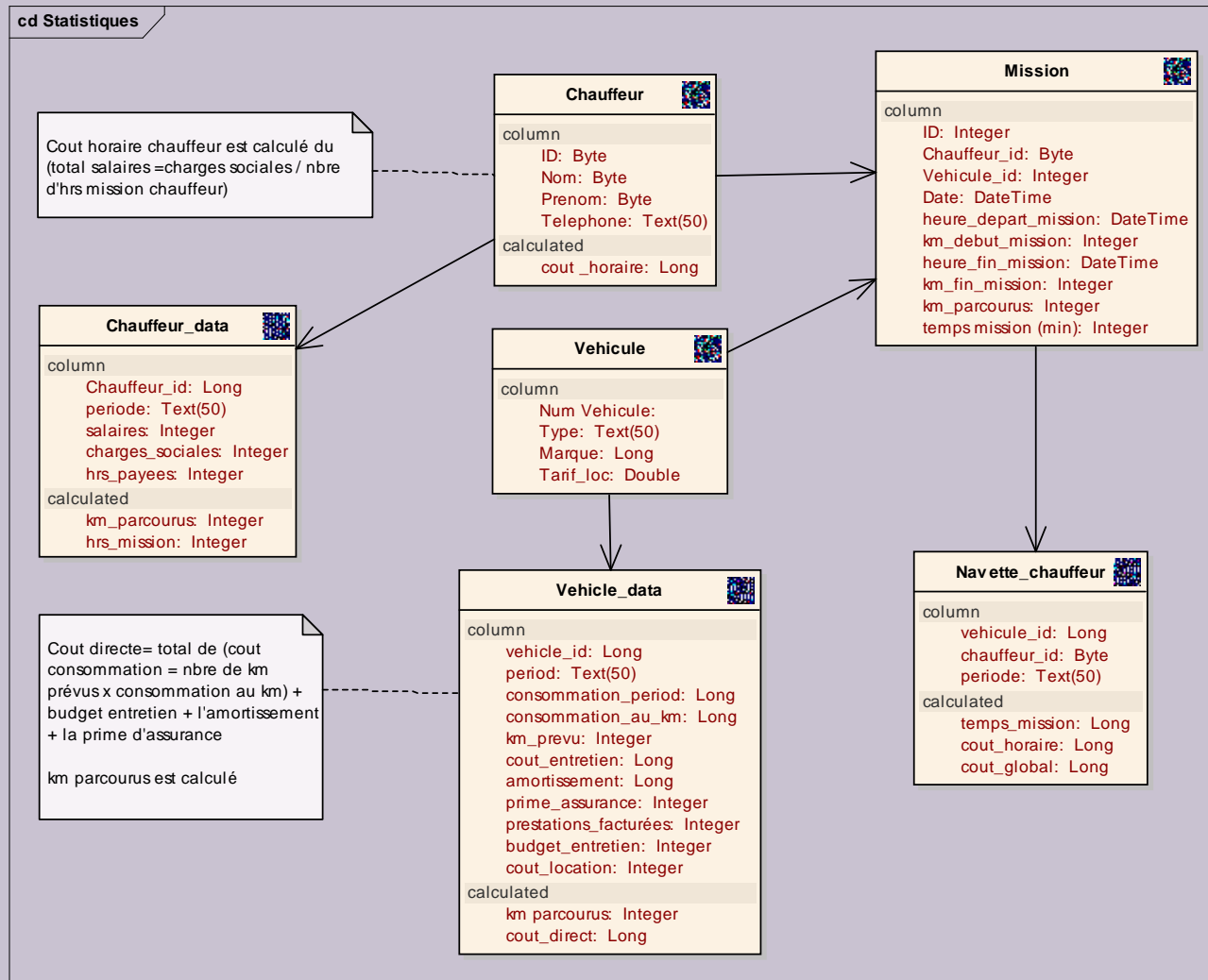
# Diagramme d'activité



# Diagramme de séquences



# Modèle Relationnel



# Diagramme de cas d'utilisation

